



Door County Land Trust

Protecting Door County's Exceptional Lands and Waters...Forever

Hiking Trail Map

8. Kangaroo Lake Nature Preserve

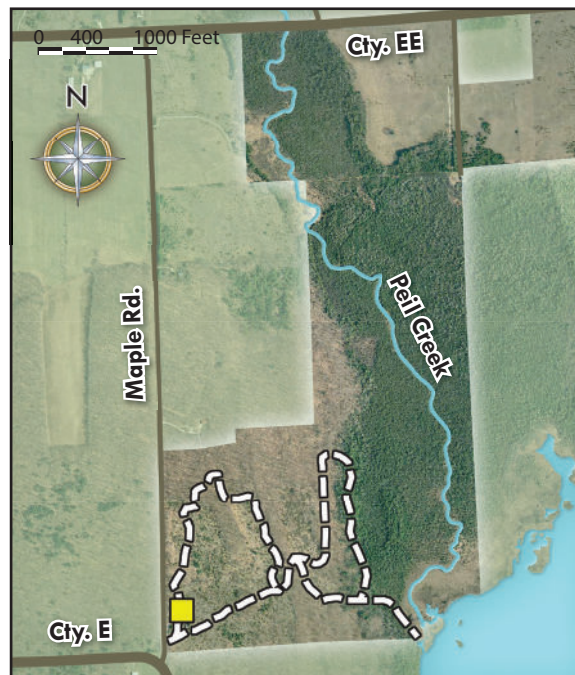
7912 North Maple Road

Preserve Acres: 257 **Miles of Hiking Trail:** 1.5

Trail Rating: Easy-to-moderate on varied terrain with incline along bluff slope

Trail and Preserve Features: Trail travels eastward beginning on the top of the Niagara Escarpment and winds down to the edge of Kangaroo Lake, offering stunning views and opportunities for wildlife observation. Trail offers two loops extending northward through a mixed hardwood and conifer forest. While hiking on this preserve, it is not uncommon to observe rare plants and animals including bald eagle, osprey, Caspian tern, dorcas copper butterfly and dwarf lake iris.

Where Land and Water Meet... The Kangaroo Lake Nature Preserve holds a special place in Land Trust history—it is our first preserve! Thanks to land donations and a strong partnership with The Nature Conservancy, nearly 700 acres along the lake's north shore are protected. This is Door County's most diverse lake, with more than 14 native fish species documented here.



Door County Land Trust

PO Box 65 • Sturgeon Bay, WI 54235

920.746.1359

www.DoorCountyLandTrust.org